

### Question 1

Draw the corresponding dual circuit of the circuit shown in Fig. 1.

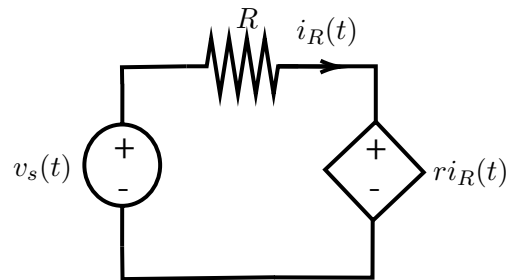


Figure 1: A circuit for which the corresponding dual circuit is required.

### Question 2

Consider the circuit graph of Fig. 2 and write KCL and KVL equations for the fundamental cut sets and fundamental loops of a suitable tree. Draw the fundamental cut sets and fundamental loops as well as the tree.

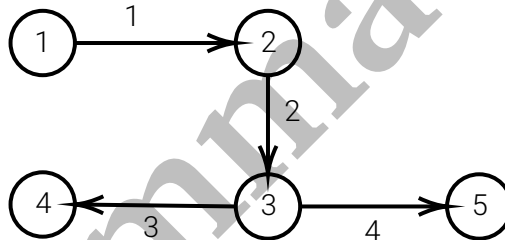


Figure 2: A circuit graph for which the KCL and KVL equations are required.